

ORLANDO™ WITH DENVER E-RIBBON BASIC 720MM / 920MM / 1120MM



Using the CEVB (Controlled Ethanol Vapour Burning) technology, Decoflame has created Orlando with the Denver e-Ribbon Basic burner, a simplified automatic burner with built-in casing. Featuring the e-Ribbon Fire™ burning system, it is suitable where safety and ease operation are in focus.

It is possible to **DOWNLOAD** principle drawings below. They are illustrated below with convertible standard size models. **Standard frame size:** 50x5mm.

Orlando can be ordered with:

- A. Manual burner (Convertible and Non-Convertible)
- B. Denver e-Ribbon Basic burner (Convertible)
- C. MTM (made-to-measure) with Denver e-Ribbon Fire burner (Non-Convertible)



Open to front

- ↘ 800x400x300
- ↘ 1000x400x300
- ↘ 1200x400x300



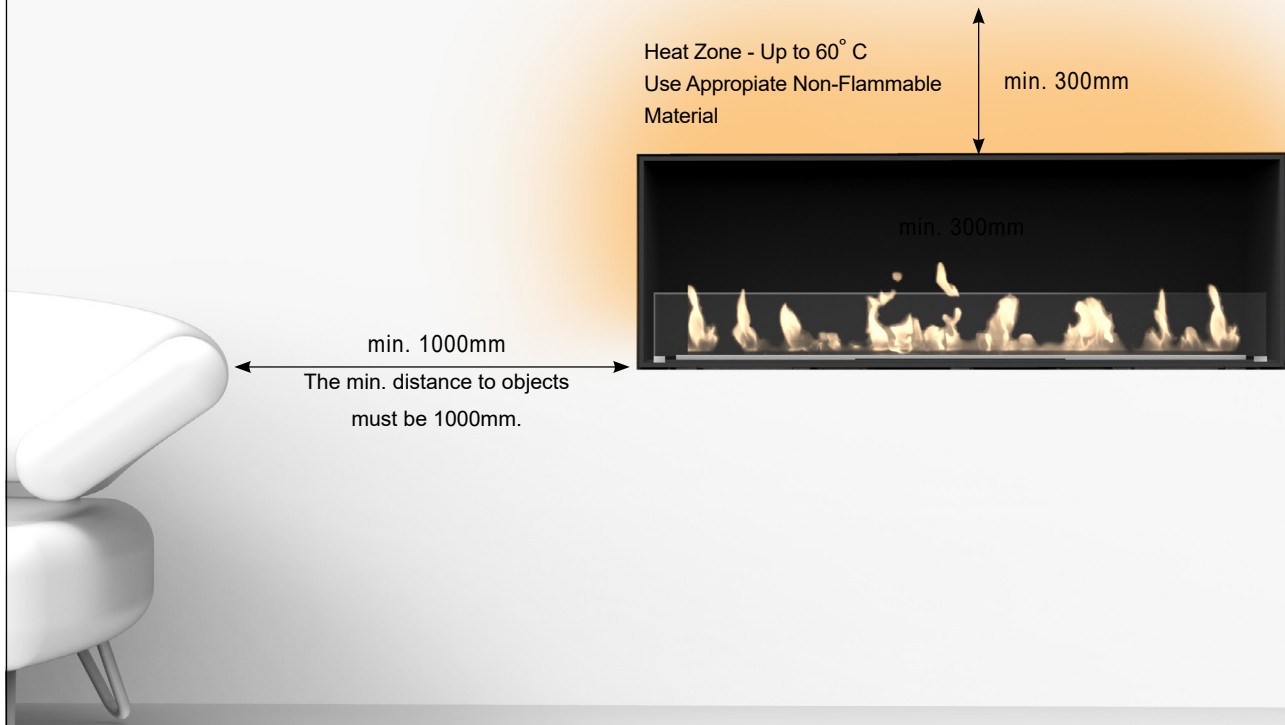
Open to front and back

- ↘ 800x400x308
- ↘ 1000x400x308
- ↘ 1200x400x308



Watch the video of the Orlando with Denver e-Ribbon Basic burner. Please scan the QR code.

Heat-Zone



Location under TV-screen

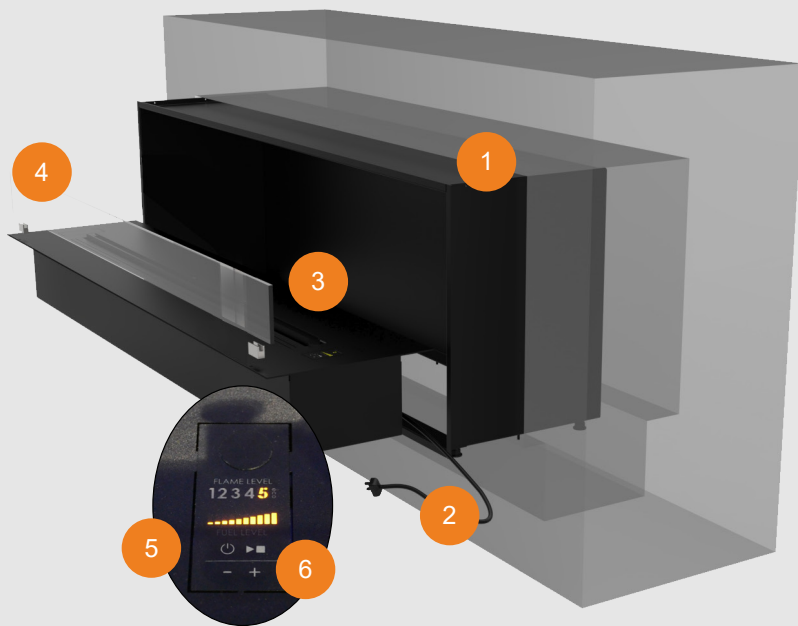
It is NOT recommended to place TV-screens or valuable paintings over the fireplace as the rising hot air can damage the materials.

If you decide to use a construction containing a TV-screen over the bio fireplace, the following instructions must be followed, otherwise please consult your retailer or Decoflame.



It is imperative to follow the indications in the User's Manual concerning the installation of decorative or electronic items above the fireplace.

INSTALLATION




How to attach the frame to the casing


Step 1: Make sure that the dimensions of the cut-out correspond to the measurements indicated in the technical drawing received with your fireplace. *Everything must be in level.*

Step 2: Connect the fireplace to an electrical power supply.

Step 3: Recess the fireplace into the wall cut-out and place the frame according to the indications in the User's Manual.

Step 4: Place the glass screen/s on to the top pin holders.

Step 5: Turn on  the fireplace. Fill in the right amount of bioethanol by verifying the level on the indicator.

Step 6: Start the fireplace by pressing the Play/Start  button on the control panel.

Wait around 3 minutes before the fireplace is fully operational.

Enjoy your fire.

Features

- e-Ribbon™ technology
- Safety sensors / Safety chamber
- Fuel Level Indicator / Flame Level Indicator
- Remote control
- Bluetooth / App
- 6 flame levels (1-5 + ECO-Wave)
- 8mm aluminium casing and baseplate
- No chimney required - no smoke, ash or soot
- Safety chamber
- Glass screen ordered (Full and/or low glasses)

Optional

- Made-to measure
- Brushed stainless steel
- RAL colours

Standard finishes

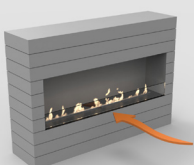


Optional

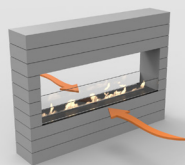


Glass shield

A



B

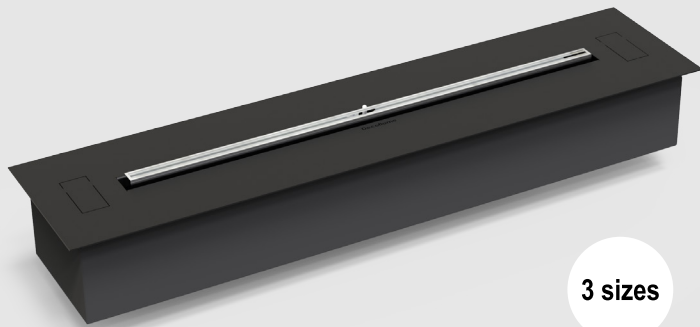


Decoflame strongly recommends installing glass shields in order to protect the flame from draught, while keeping it vivid.

Model A Mandatory: One 110mm high glass

Model B Optional: Two 110mm high glasses or one full glass and one 100mm glass.

DENVER E-RIBBON BASIC BURNER



3 sizes

TOPPLATE (BURNER) FINISH

- Standard: Black powder coated top-plate
- Optional: Stainless steel and any RAL colour
- Other finishes on request

TECHNICAL INFORMATION

	720mm	920mm	1120mm
Flametray size	500mm	700mm	900mm
Capacity	4L	5.8L	7.2L
Fuel consumption	0.3 - 0.6 l/h	0.4 - 0.8 l/h	0.6 - 1 l/h
Burning time	7 - 20h	7.5 - 20.8h	7.3 - 20h
Heat output	1.2 - 3.2 kWh	1.6 - 4.3 kWh	2.1 - 5.7 kWh
Net weight	19.5kg	22kg	26kg
Minimum room size	64m ³	89m ³	115m ³

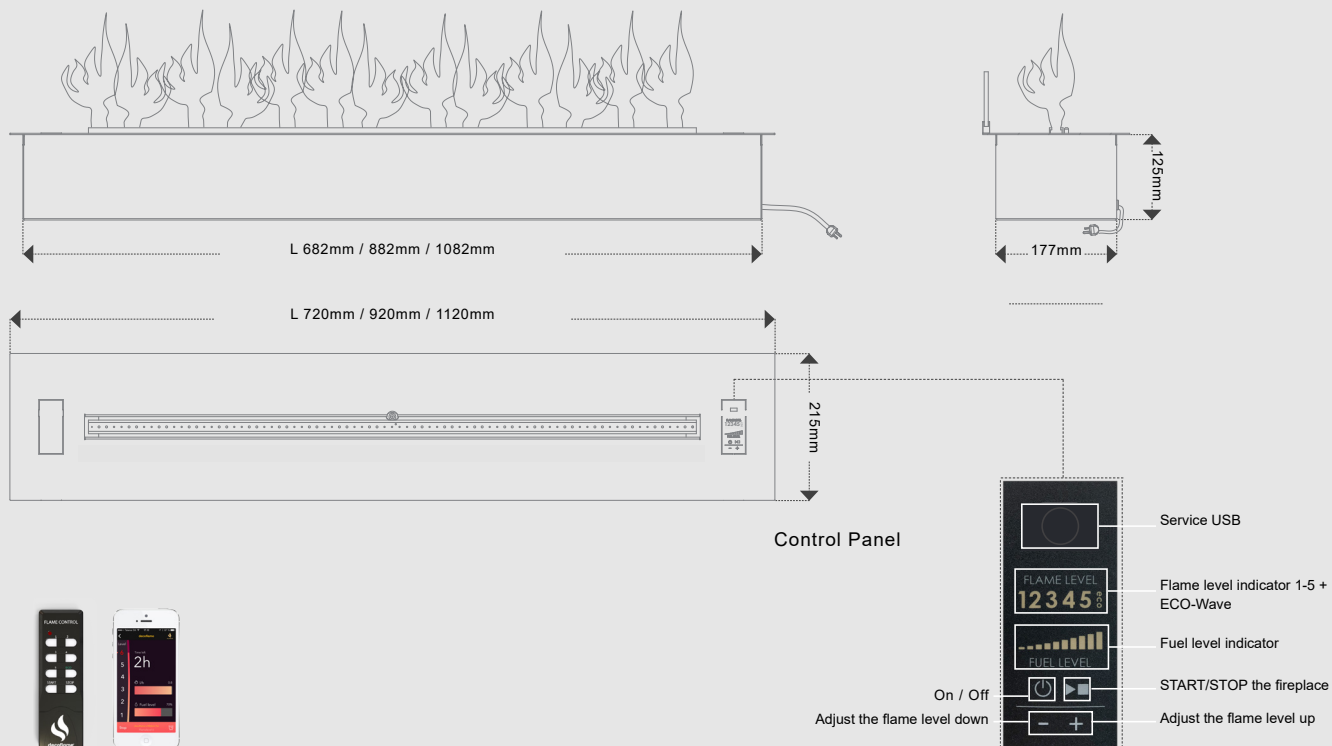
Power supply: 220V - 240V, 50 Hz 5A

BIOETHANOL

For use and information about bioethanol, please visit our website www.decoflame.com.

(Please be aware that bioethanol is essential to a proper use and guarantee of your product).

BURNER TECHNICAL INFO



Use the supplied remote control or download the Decoflame App to your mobile device for controlling the biofireplace.

The Decoflame App is available for both Andorid and Apple.



App Store



Google play