

# App Pairing Instructions for IOS and E-tab

Applicable to HALO & TRADITIONAL models

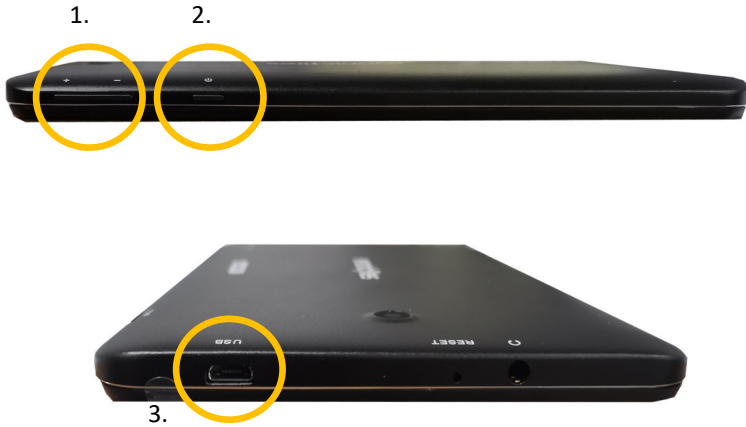


**Please Note:** Instructions apply to both E-Tab AND App

**evonicfires**  
quality electric fires built in britain

English

# E-Tab Controller:



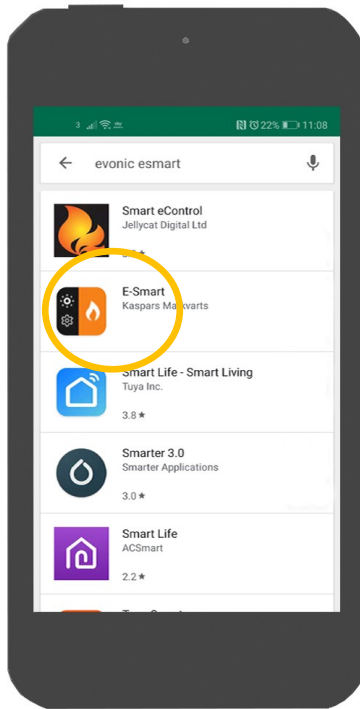
1. Volume control
2. Power Button—Press and hold for 3 seconds to turn **ON/OFF**
3. **USB** charging point
4. **USB** connection lead and plug socket



The e-smart app can be used with both smart phone and tablet devices.

Utilising the e-smart app will allow complete controllability of your Evonic product.

To download the Evonic e-smart app please follow the below steps.



1. Access either the Apple app store or Google play, this is depending on the operating system of your smart phone or tablet.
2. Search, locate, and download the app entitled evonic e-smart.

**Please note: E-Tab control system comes with e-smart app already installed**

# Connecting a device to an Evonic product:

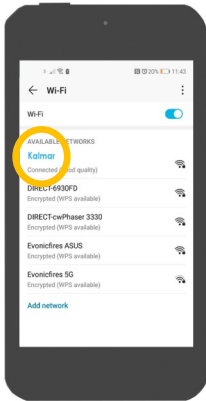


Fig 1.



Fig 2.

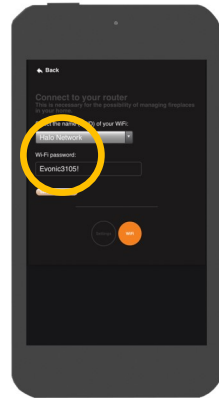


Fig 3.

3. Once your appliance has been installed and turned on, go to the wi-fi settings on your device and select the fire. This will connect your device to the fire. Fig 1.

4. Open your Halo app, and in the settings panel ( Fig 2.) establish your connection by selecting your home wi-fi. This will pair the fire with your router. Fig 3.

5. Your evonic product will now be paired and ready to operate.

6. Under the settings panel located in the app, you can now change the name of your fire. Ensure you enter your e-mail address, as this is to identify between the fireplace and you. Fig 4.

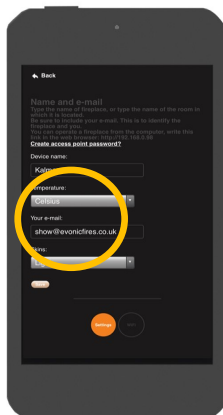


Fig 4.

# Selecting your fire:



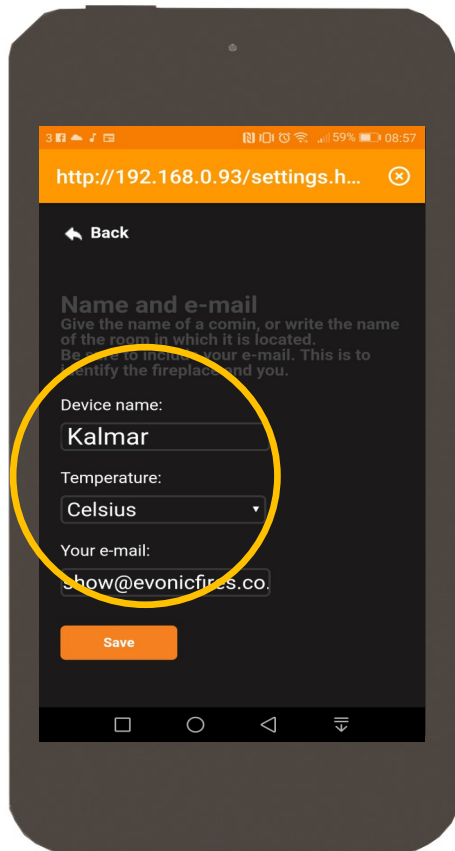
1. Once your product is paired, open the app. The above screen will appear with your fire shown. Single press **Kalmar**. **Please note:** It may take a few minutes for your fire to appear on the screen.
2. Single press the **flame** icon to turn on the lights.
3. Single press the **heater** button to turn on the heater

# App Control Overview:



- A). **Target Temperature**—This displays the desired room temperature.
- B). **Temperature Control**— Temperature adjuster. Press, hold and swipe to adjust.
- C). **Animation setting**— Displays selected animation. Single press arrow to reveal drop-down menu.
- D). **Side Lights**— Single press to turn on side lights.
- E). **Lighting**—Single press to turn on/off the fuel, flame & overbed lighting.
- F). **Flame**— Slide left or right to adjust brightness of flame.
- G). **Fuel**— Slide left or right to adjust brightness of fuel bed.
- H). **Speed**— Single press to adjust the speed of selected animation.

# Changing units of temperature:



1. Change the unit of temperature by single pressing the arrow on the temperature drop-down. Choose between Celsius/Fahrenheit

# Problem Solving:

1. **e-smart app will not connect to product and is continuously showing the below screen:** Please follow the below steps.



1. Force close the app by pressing the square at the bottom of your phone/e-tab. Then attempt to re-launch the app.
2. Ensure that the rocker switch is in the **ON** position, and re-scan for the product.

# evonicfires

1 Evonic House, Clifford Park, Clifford Lane,  
Stratford upon-Avon, Warwickshire, CV37 8HW

[www.evonicfires.co.uk](http://www.evonicfires.co.uk) 01789 263868